

Guysborough County Inshore Fishermen's Association

LFA 31A / GCIFA completes and submits 2010 Integrated Fisheries Management Plan (IFMP) and Sustainability Plan (SP) for Lobster

Sustainability Plans include measures to enhance a Lobster Fishing Area's (LFA) economic prosperity and the long-term sustainability of its lobster fishery. SP that are developed and submitted to DFO must include conservation measures that apply to an entire Lobster Fishing Area (LFA).

The SP must also include an explanation or justification of why a specific measure will help an LFA achieve conservation goals. In other words, the plan will reflect the unique ecosystem and fishery circumstances within each LFA as well as the ability of an applicant to effectively implement the measures within a plan. SP should balance the need for improvement in conservation and sustainability of their lobster fishery with some flexibility to suit local conditions, including the biology of the stock and ecosystem factors.

Lobster fishermen within 31A and B have developed and completed and assessed conservation measures for their lobster fishery that have been in place since 1998. Both LFA's were in a very solid position to create the new IFMP and SP without having to implement new measures. GCIFA 31B members have contributed to their 2010 plan through meetings and input with the ESFPA. Thank you to ESFPA.

The LFA-wide Sustainability Plans will be assessed according to the "Evaluation Framework for Sustainability Plans for LFA Wide Conservation Measures for Atlantic Lobster Fisheries". (<http://www.dfo-mpo.gc.ca/fm-gp/peches-fisheries/fish-ren-peche/lobster-homard/cmalf-evaluation-mcpha-eng.htm>)



Sea Sampling, Duncan and Robert Bellefontaine - Port Felix



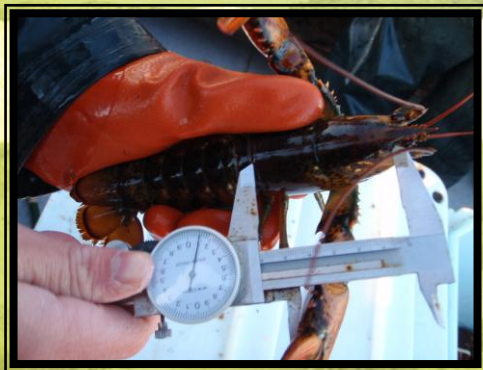
Lump fish caught and released during sea sample, Queensport

"If you work on a lobster boat, sneaking up behind someone and pinching him is probably a joke that gets old real fast."

Sea Sampling



Small Lobster (carapace 50mm) during sea sampling, Queensport



Small Lobster (carapace 60mm) Sea Sampling, Cole Harbour



Large male lobster (carapace 168mm) sea sample, Morris Casey-Little Dover

According to Environment Canada, the spring of 2010 saw less rain than in 2009; however that was not the case for the wind. It is a chilly spring to say the least, however with weather aside it was a safe season. We were able to get many sea samples done despite the weather. We did 15 sea samples between first, middle and end of season in 31A and 9 in 31B. We would like to thank all the fishermen who allowed us to take the samples during the fishing season. Without your help our research would not be possible. Some observations made during sampling were that there was a large amount of very small berried females (carapace Length 60 – 70mm) and also overall small lobsters. Once all data is compiled the research will be sent out to the fishermen at their request.

Marine Researcher

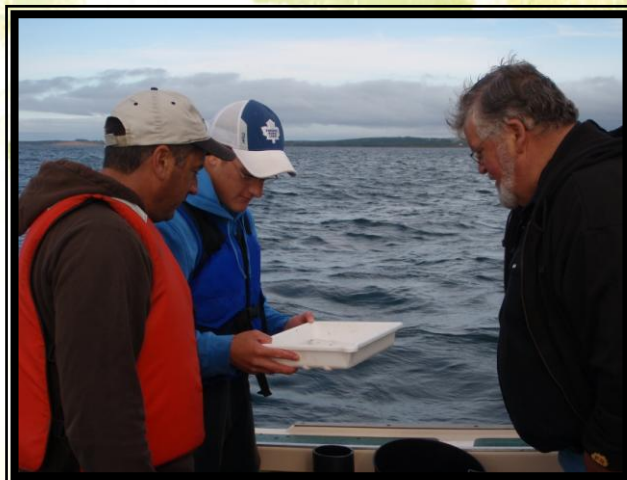
Melinda Cole has been working at GCIFA since November 2009 as our Marine Researcher. Originally Melinda is from Canso and 4 years of experience in environmental sciences including contract work for DFO. She has been working very diligently on producing documents for GCIFA. In addition to analyzing last year's lobster data Melinda worked on the MPA response, the new IFMP for lobster, an inshore fisheries sector report for ESSIM and a working document for GCIFA to record their data from the past decade of lobster research. She is enjoying her time here at GCIFA and looks forward to what the 2010 research season brings.

Marine Protected Area

DFO has begun the process of selecting the next area for marine protected area designation. DFO has narrowed it down to three areas Misane Bank, Middle Bank and St. Anns Bank. GCIFA participated in several consultations with DFO to share our knowledge of the three Areas of Interest and to get information on the selection process. The consultation period ended May 15th, 2010 and GCIFA submitted a formal response to DFO - Oceans Branch. This document provides a place to voice our concerns and opinions on MPAs, the selection process, location, and timeline and was one of very few written responses received by DFO. If you would like to view this document please contact Ginny or Melinda at the office.

Larval Tows

It was a very exciting season this year during larval tows to say the least. We saw a vast amount of stage IV lobsters early in the season. The first stage IV lobsters were seen with Robert Welsh on July 26th and an all time high of 240 on August 11th towing with Alen Newell. We also saw an increase in stage IV lobsters when towing with Duncan Bellefontaine then in previous years. This may have been caused by an early release of eggs by the many small berried females; with favorable weather conditions the early released larvae had an increased chance of survival.



Steven Welsh, Miles Jackson and Robert Welsh – Larval Tows

2010 "Window" Measure Assessment

The 31A fishermen have begun an assessment of their "window" measure, to determine if the contribution is as effective as was determined upon implementation in 2002. The assessment includes a tagging of "window" lobsters from 114 – 124 mm and recaptures, at-sea sampling and dive sects over the summer.



40 Stage IV's in tow with Alen Newell, July 28th 2010

Upcoming Training and Certification – Anyone interested in Industry related training please contact Ginny at the office.

We are looking at offering the **Fishing Master Class IV** through as a **Computer CD** program. An 80 hour preparation/ tutoring course for anyone who wants to do the program with the CD. The instructor / tutors will provide assistance with Basic computer, Chart work, Oral and written exam prep and be available for assistance. There will be a minimal charge for the CD and instruction is free to GCIFA members and crew members. This will be a fall/ winter program. Please contact Ginny for more information.

GCIFA will be holding two Market Research Analysis Courses for fishermen to gain insight into how markets develop, pricing, participants, and research tools used to gather market information. There will be one course in Canso and one in the 31b area. There will be no fees for the courses.

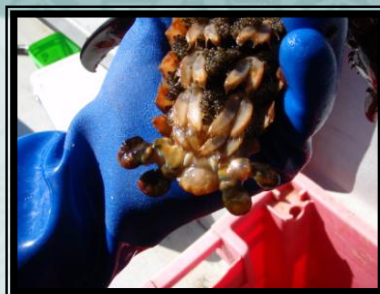


V-Notching, Drumhead

Research with the Bedford Institute of Oceanography

Maturity Study

We continued our research with Dr Angelica Silva on the maturity study in the Canso area. During the lobster season samples of pleopods were taken by Sarah Delorey and Miles Jackson and then sent to Dr Silva to be analyzed at BIO. The information collected is used to determine at what age the females are mature enough to produce eggs.



Deformed tail found during Maturity Study, with Basil Dobson

NaGISA

NaGISA is a global project to develop and sustain the first long term benthic monitoring program in Atlantic Canada. The NaGISA project was continued again this year with Dr. Melissa Wong and Dr Angelica Silva. Quadrants were set again at land sea margin (low, mid and high tide). The divers also continued to collect sample from 1, 5 and 10 meters. The samples of sea weed were taken from .5x.5 quadrant and sea weed and marine life was taken from .25x.25 quadrant to be analyzed.



Quadrant at Mid tide, Glasgow Beach

Office: (902) 366-2266
Fax: (902) 366-2679
E-mail: gcifa@gcifa.ns.ca
sdelorey@bellaliant.com

GCIFA

Guysborough County Inshore Fishermen's
Association
990 Union Street
PO Box 98
Canso, Nova Scotia
NS B0H 1H0

